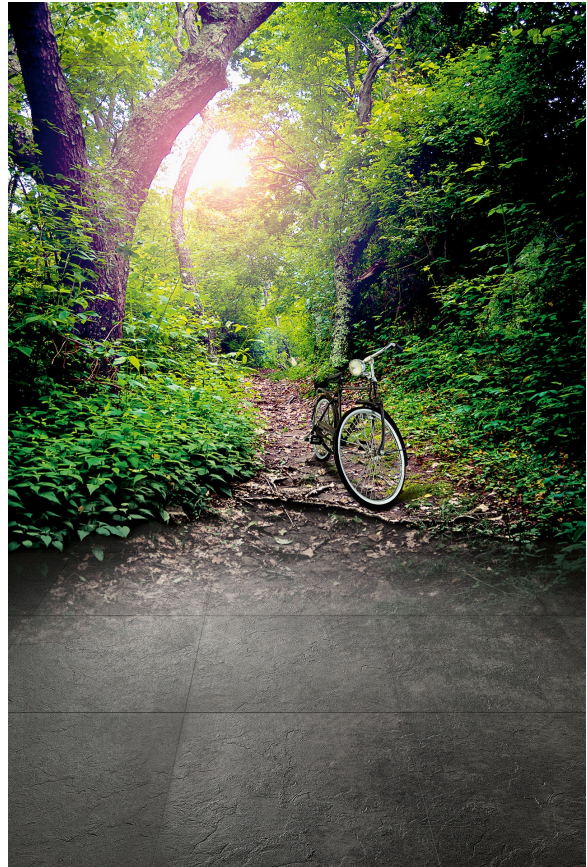


Ecotech Preto

45x45
NATURAL
Base



Ecotech Cinza

Features



Typology
full body porcelain tiles



Thickness
8.2mm











Stock Unit
m2



Surface
structured



Hue Variation
Strong

 <p>Traffic Level Heavy</p>	 <p>DIN 51130 - Rampa R10</p>	 <p>DIN 51097 - Rampa A</p>	 <p>ENV 12633 - Pêndulo CLASS 2</p>	 <p>BS 7976 - Pêndulo PTV 36+</p>
 <p>DCOF ≥ 0.42</p>	 <p>6 Pieces 1.22 m² 24,0 Kg</p>	 <p>34 Boxes 41,48 m² 837 Kg</p>		

Notes

Contact Information

Need more information? On our website, you will find catalogues, technical data sheets and lots of inspiration to help you design your project. You can also compare products, apply different floor and wall tiles in a virtual environment or design your own 3D space. For a personalised service, call or e-mail us. If you prefer, leave us a message at www.revigres.com. We will be available to help you find the best solution.

Headquarters

Apartado 1 (Vale do Grou)
3754-001 Barrô - Águeda

Delegation

Praça José Fontana n.º 26 A-C
1050-129 Lisboa